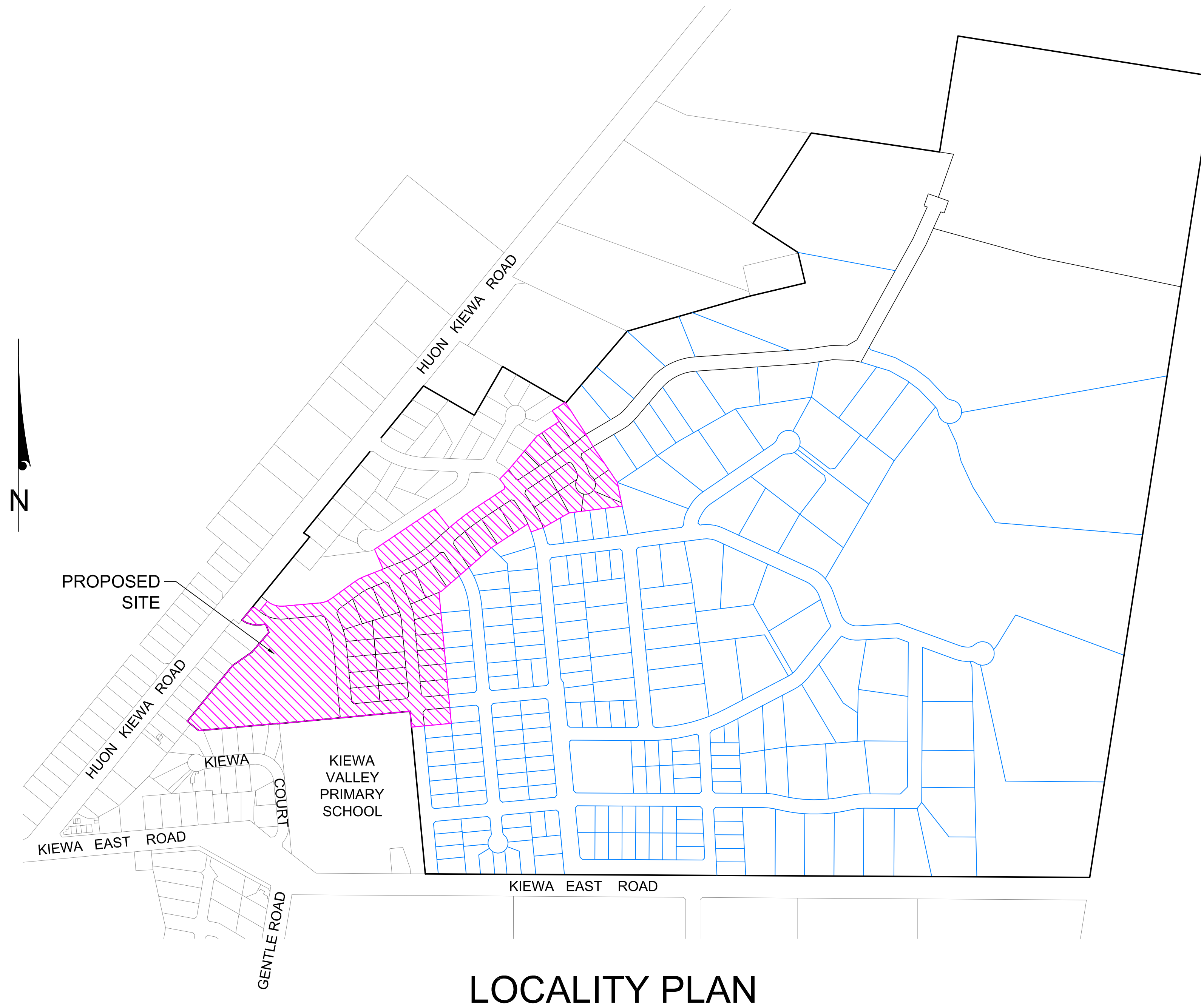


KIEWA VALLEY ESTATE

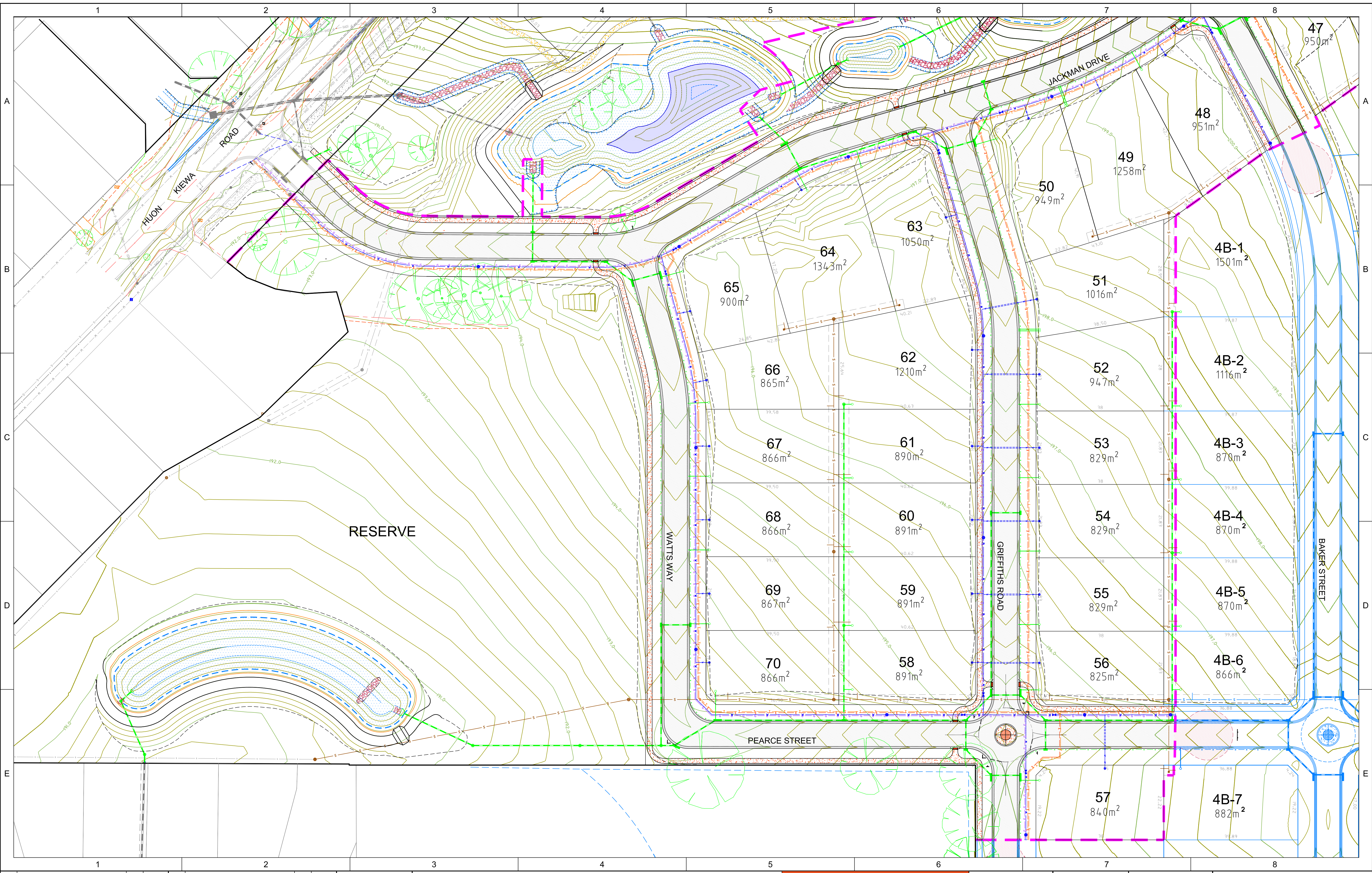
STAGE 2, 38 LOT RESIDENTIAL SUBDIVISION

HUON KIEWA ROAD, TANGAMBALANGA

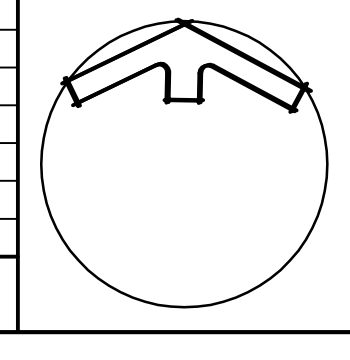


LOCALITY PLAN

PROJECT No.: 16006402E



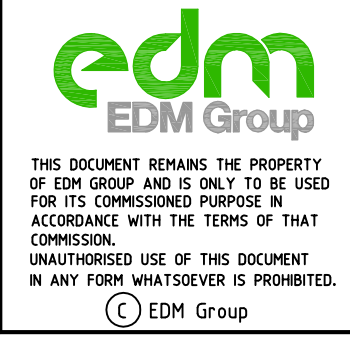
Issue	Amendments	Int	Date	Issue	Amendments	Int	Date
5	CONSTRUCTION ISSUE	BWAL	22NOV17				



NOTES

Scale 1:500

0 5 10 15 20 25m

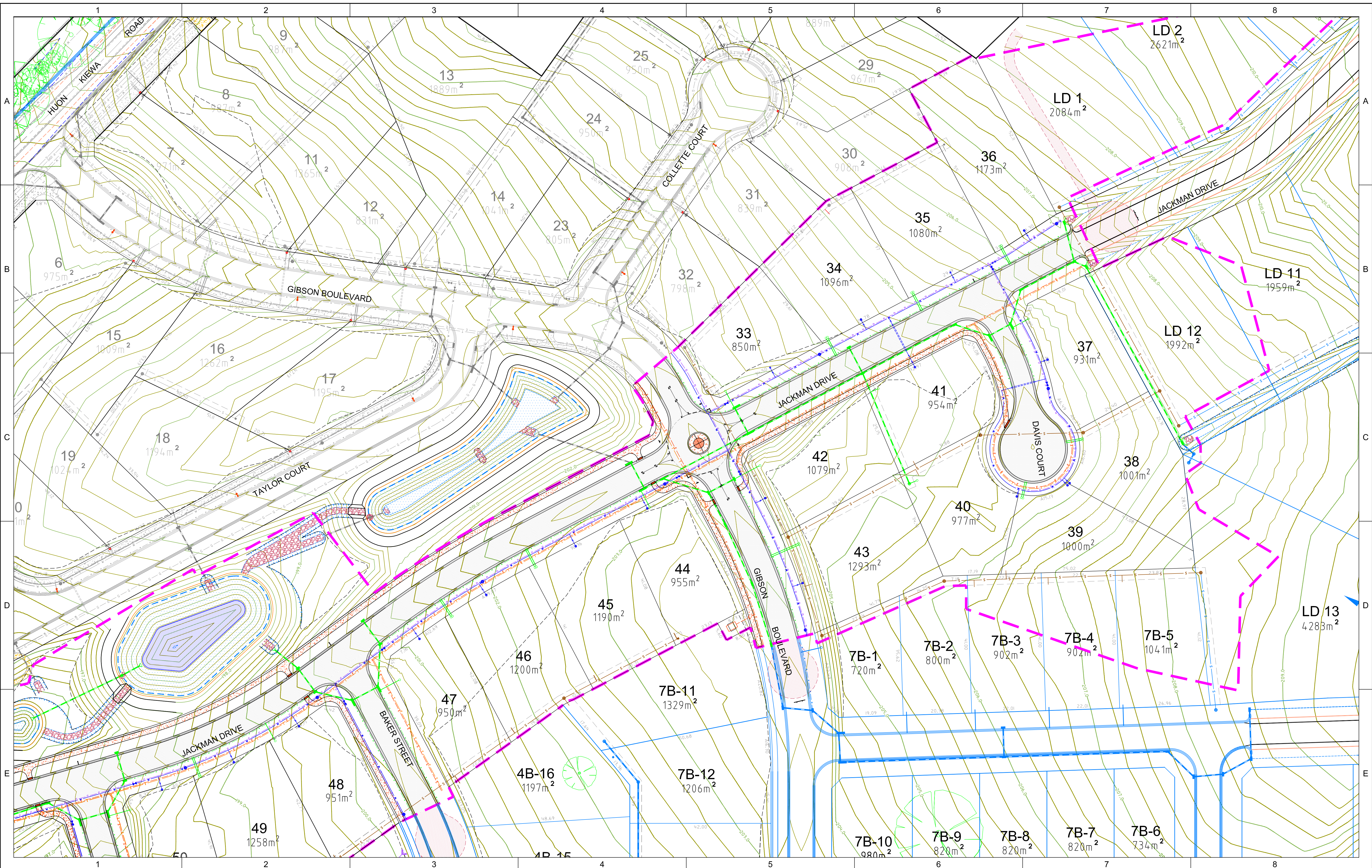


Designed B WAL
 Checked RTR
 Drawn B WAL
 Survey EDM
 Date 01/08/16
 Datum AHD

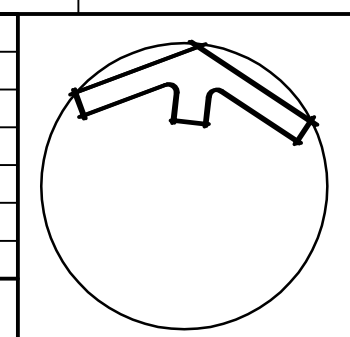
EDM Group
 PLANNERS SURVEYORS
 & ENGINEERS
 OFFICES 99 HUME ST
 PO Box 317 WODONGA 3689
 Ph (02) 6057 8578
 Fax (02) 6056 2392
 EDM Group ABN 12 532 366 914
 www.edmgroup.com.au

KIEWA VALLEY ESTATE PTY LTD
 38 LOT SUBDIVISION (STAGES 1B, 2B, 3B & 5A)
 KIEWA VALLEY ESTATE
 HUON-KIEWA ROAD, TANGAMBALANGA
 GENERAL LAYOUT PLAN
 Drawing No. 160064.02 Model
 Scale 1:500

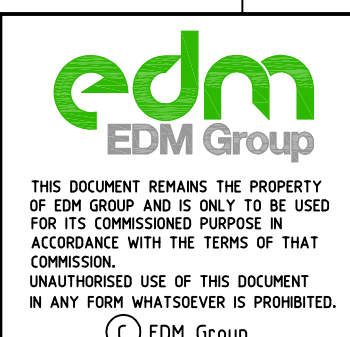
Original Sheet
 SHEET 1 OF 2
 A1



REVISIONS		REVISIONS	
Issue	Amendments	Issue	Amendments
5	CONSTRUCTION ISSUE		



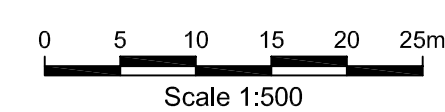
NOTES



Designed	B WAL
Checked	RTR
Drawn	B WAL
Survey	EDM
Date	01/08/16
Datum	AHD

EDM Group
 PLANNERS SURVEYORS
 & ENGINEERS
 OFFICES 99 HUME ST
 PO Box 317 WODONGA 3689
 Ph (02) 6057 8578
 Fax (02) 6056 2392
 EDM Group ABN 12 532 366 914
 www.edmgroup.com.au

KIEWA VALLEY ESTATE PTY LTD
 38 LOT SUBDIVISION (STAGES 1B, 2B, 3B & 5A)
 KIEWA VALLEY ESTATE
 HUON-KIEWA ROAD, TANGAMBALANGA
 GENERAL LAYOUT PLAN
 Drawing No. 160064.02 Model
 Scale 1:500



Original Sheet
 SHEET 2 OF 2
 A1